



IP camera with GANZ AI analytics

PixelPro AI

Model	ZNP-B5M550D-A
Sensor	1/2.8" CMOS --- IMX335 STARVIS
Sens. (AGC ON)	Color: 0.02lux (F2.0) IR ON: 0lux
Day/Night Mode	IR-Cut automatic filter
Electronic shutter	1/5 - 1/5000 (Slow shutter - x2 / x4 / x8)
Iris	DC-Iris
WDR	True WDR > 120dB
Noise Reduction	2D / 3D-DNR
Lens	Motor-zoom with AF 5 - 50mm (50° ~ 7°)
IR Illuminator	8 x IR LED, range up to 80 meters
AV Compression	H.265 H.264 MJPEG VBR+ G.711U
Bitrate (CBR/VBR/VBR+)	Stream 1: 512 Kbps - 15 Mbit Stream 2 and 3: 512 Kbps - 8 Mbit
Resolution and framerate	2592x1944 (30fps) 2592x1520 and 1920x1080 (30fps).
Streaming	Stream 1: 2592x1944 (5MP) max. Stream 2 and 3: 640x480 (VGA) max. Stream 4 (SVC): 1/2, 1/4, 1/8
Image settings	Rotation, saturation, brightness, contrast, sharpness
Digital functions	HLC BLC Auto-ROI DEFOG Anti-Flicker
Corridor mode	N/D
Privacy mask	4 zones
Events	Motion detection (4 zones) PixelPRO AI analytics
Network protocols	TCP, UDP, IPv4/6, HTTP/S, DHCP, FTP, SMTP, DNS, DDNS, NTP, RTP, RTSP, RTCP, Multicast Unicast, uPNP, WS-Discovery, SSL, PPPoE
RTSP support	RFC2326 standard (VLC Player / QuickTime).
Security	User authentication, hardware WatchDog
Compatibility	ONVIF, HTTP API
Ethernet	10/100 Base-T, RJ45
Audio	1 x EC (RCA - F) 1 x WY (RCA - F)
Alarm	1 x EC 1 x WY
Analog video OUT	N/D

ZNP-B5M550D-A

Special features:

- **AI (Artificial Intelligence) analytics** - artificial intelligence using *DeepLearning* algorithms to provide instant and precise detection and recognition of objects like person, vehicle.
- **VBR+** - dynamic video stream coding providing adaptive QoS configuration for optimal link utilization through reciprocal renegotiation of parameters. Provides up to 20-30% efficiency gains over VBR encoding while maintaining the same video quality.
- **Auto-ROI** (Region of Interest) - automatically designates areas of interest based on motion detection. The camera downgrades the image quality outside the ROI zones to reduce bandwidth consumption while maintaining maximum image quality in the ROI zones.
- Sending a "Keep-Alive" test signal (e.g., to a monitoring station) to confirm continuous communication with the device.
- Possibility to install additional licenses for special analytical functions (including LPR, person fall detection, etc.).
- For a single channel, only one type of detection can be active at the same time (for example, LPR or fall detection of a person, excludes detection of crossing a line or entering a protected zone).
- The cameras were designed in South Korea.

Functional capabilities of AI analytics

AI engine features (Artificial Intelligence)	Object detection - <i>DeepLearning</i> engine
	Classification: person, vehicle, bicycle (Detector)
	Track multiple objects simultaneously (Tracker)
Behavioral detection	Intrusion, staying, loitering, entering, exit, line cutting (directional), stopping
Alarm filtering	Exclusion (masking) zones, object size
Rules	Creating relationships between the conditions of jw.
IP notifications	ONVIF, HTTP, HTTPS, TCP, E-mail, FTP

Other parameters

Reset button	Yes
SD card support	Micro SD slot SDHC SDXC, 128GB max.
Power supply	12VDC 24VAC PoE (802.3af / class-3)
Power consumption	8W (IR-LED OFF) / 14W (IR-LED ON)
Power output	12VDC (100mA)
Operating temperature	-30°C ... +50°C
Max Humidity	90%
Certifications and classes	CE / FCC / IP67 / IK10 (housing)
Dimensions / weight	Ø 86 (body) x 270 mm / 1120g
Range of adjustment	180° (H) / 180° (V) / 350° (Rotation)

**Adapters
for attachment:**



ZA8-JBMP-2
(E holes)

ZA8-CBK627B
only in combination
with box **ZA8-JBMP-2**



ZA8-CBK627B

Compatibility:



PixelMASTER



DigiMASTER



CORTROL VMS



KronosNET

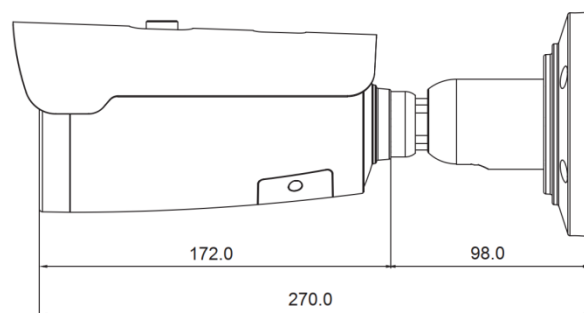


SAFESTAR

Table showing detection distance (object size)

Object class	Person		Vehicle	
	Lat.	Height	Lat.	Height
Standard AI detection	2,00%	6,00%	7,00%	6,00%
Max. detection 5mm (50° H)	30 meters		30 meters	
Max. detection 50mm (7° H)	240 meters		240 meters	

External dimensions:



Examples of detecting Vehicle Groups in the Vehicle class:

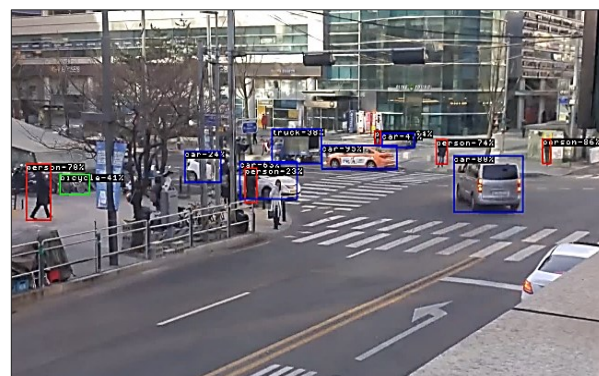
Detected vehicles:	Non-Detected vehicles
<ul style="list-style-type: none"> Passenger vehicles Lorry (up to 3,5 ton) Bus, Autobus , Pickup TIR'y (Truck with trailer) Bicycle, Moto-bicycle i Motorbike Trucks with closed cargo holds (e.g., refrigerated trucks) 	<ul style="list-style-type: none"> Digger and similar to it Forklift and similar to it Construction side vehicles Tractor and similar to it Quad and similar to it <p>The above vehicles, due to their general characteristics and appearance, may cause an error or lack of detection for the Vehicle class.</p>



Flexible zones definition is possible



Multi-object tracking and classification even with huge traffic



Precise object classification on long distance